

**CDO1-Promoter-Methylierung: Gen-Repression und
die Bedeutung als prognostischer und prädiktiver
Biomarker für ein rezidivfreies Überleben bei Patienten
mit Prostatakarzinom**

Inaugural-Dissertation

zur Erlangung des Doktorgrades

der Hohen Medizinischen Fakultät

der Rheinischen Friedrich-Wilhelms-Universität

Bonn

Lisa Zipfel

aus Düsseldorf

2021

Angefertigt mit der Genehmigung
der Medizinischen Fakultät der Universität Bonn

1. Gutachter: Prof. Dr. med. Glen Kristiansen
2. Gutachter: PD Dr. med. Stefan Hauser

Tag der Mündlichen Prüfung: 10.12.2020

Institut für Pathologie

Direktor: Prof. Dr. med. Glen Kristiansen

Inhaltsverzeichnis

1.	Deutsche Zusammenfassung	4
1.1	Einleitung	4
1.2	Material und Methoden	6
1.3	Ergebnisse	8
1.4	Diskussion	10
1.5	Zusammenfassung	12
1.6	Literaturverzeichnis der deutschen Zusammenfassung	13
2.	Publikation	16
	Introduction	18
	Results	19
	Discussion	23
	Materials and Methods	24
	References	26
3.	Danksagung	28

1. Deutsche Zusammenfassung

1.1 Einleitung

Die vorliegende Arbeit setzt sich mit der Frage zur Therapieentscheidung der Behandlung des Prostatakarzinoms und der damit im Zusammenhang stehenden Bedeutung von Biomarkern auseinander. Insbesondere das Prostatakarzinom stellt einen interessanten Forschungsschwerpunkt dar, da es sich um die häufigste Krebserkrankung des Mannes in der westlichen Welt mit für 2016 für die USA prognostizierten 180.890 Todesfällen handelt (Siegel et al., 2016).

Damit also neben einer hohen Inzidenz eine relativ geringe Mortalität aufweist. Daher ist es von entscheidender Bedeutung zum einen die Patienten zu ermitteln, deren Karzinom mit einer höheren Sterblichkeit einhergeht und diese einer lebensrettenden Therapie zuzuführen, sowie zum anderen bei Patienten mit einem geringeren Mortalitätsrisiko nicht überzuthrapieren.

Die klinische Therapieplanung orientiert sich ganz wesentlich an klinikopathologischen Parametern sowie der Bildgebung, allerdings lassen diese Parameter nicht in allen Fällen eine zielführende Individualisierung der Therapie zu. Eine wichtige Rolle spielt auch das PSA-Screening mit dessen Hilfe sich das Prostatakarzinom frühzeitig auch bei asymptomatischen Patienten erkennen lässt. Jedoch kann ein erhöhter PSA-Wert auch durch benigne Prostataerkrankungen verursacht sein (Moyer et al., 2012).

Die meisten Patienten mit einem lokalisierten Prostatakarzinom erhalten eine aktive Behandlung wie z.B. eine radikale Prostatektomie oder Bestrahlungstherapie, wobei ein signifikanter Anteil dieser Patienten wahrscheinlich überbehandelt wird. Andererseits erleiden 24-31% der Patienten mit einer radikalen Prostatektomie einen biochemischen Rückfall innerhalb von fünf Jahren und hätten daher möglicherweise von einer adjuvanten Therapie profitiert (Kattan et al., 1998).

An dieser Stelle könnten Biomarker dazu beitragen, eine genauere und effizientere Zuweisung möglicher Therapieansätze zu erlauben, was nicht nur zu einer Schaden- und Kostenreduktion, sondern auch zu einer erhöhten Lebenserwartung und -qualität führen kann.

Das National Institute of Health (NIH) definiert Biomarker als Parameter, mit denen sich „eine Eigenschaft objektiv messen lässt, um sie als Indikator für normale biologische

Prozesse, pathogene Prozesse oder pharmakologische Antworten auf eine therapeutische Intervention heranzuziehen“ (Atkinson et al., 2001). Bisher haben sich die immunhistochemischen Biomarker nicht als hinreichend erfolgreich erwiesen und stellen keine ideale Grundlage für einen robusten prognostischen Test dar, wohingegen nukleinsäure-basierte Biomarker vielversprechender erscheinen.

Veränderungen der Methylierung von Promotoren humaner Gene ist nicht nur einer der häufigsten molekularen Alterationen in malignen Tumoren, sondern aufgrund der Stabilität von DNA, welche zuverlässig auch aus Formalin-fixierten Paraffin-eingebetteten (FFPE) Gewebe extrahiert werden kann, von großem Biomarkerpotential.

Der Methylierungsgrad der CDO1 Promotorregion scheint ein hohes Biomarkerpotential aufzuweisen. In zwei voneinander unabhängigen Studien wurde sowohl 2010 (Dietrich et al., 2010), als auch 2013 (Jeschke et al., 2013) gezeigt, dass der Methylierungsgrad der CDO1 Promotorregion im Zusammenhang mit der Metastasierung bei ER-positivem, Lymphknoten positiven Mammakarzinom steht, das gleichzeitig einer adjuvanten Chemotherapie mit Antrazyklinen zugeführt wurde.

Interessanterweise haben Brust- und Prostatakrebs einige biologische Gemeinsamkeiten: Bei beiden handelt es sich um Adenokarzinome, die durch Steroidhormone stimuliert werden und beide entstehen vorwiegend in der späteren Lebensphase (Risbridger et al., 2010).

Nicht nur beim Prostata- und Mammakarzinom scheint eine CDO1-Hypermethylierung eine wichtige Rolle zu spielen. Auch in anderen soliden Tumoren konnte diese bereits nachgewiesen (Andresen et al., 2012; Brait et al., 2012; Yamashita et al., 2014) und z.B. beim kleinzelligen Nierenzellkarzinom mit einem kürzeren Überleben korreliert werden (Deckers et al., 2015).

Aus biochemischer Sicht handelt es sich bei CDO1 um einen Katalysator des Cystein Metabolismus, konkret katalysiert CDO1 die Oxidation von Cystein zu Cystein Sulfid Säure. Damit spielt es also auch für die Taurinbiosynthese eine wichtige Rolle, da es sich bei Taurin seinerseits um ein Abbauprodukt von Cystein handelt (Chai et al., 2006; Satsu et al., 2003). Aus pathophysiologischer Sicht scheint CDO1 als mögliches Tumorsuppressorgen zu fungieren und somit Auswirkungen auf die Zellvermehrung und das Zellwachstum auszuüben (Brait et al., 2012).

Zusätzlich ist der Cystein Katabolismus in einem Stoffwechselweg involviert, der zum Wachstum von Glioblastomen beiträgt (Prabhu et al., 2013).

Dennoch bleibt die Rolle von CDO1 beim Prostatakarzinom noch unklar. Aufgrund dieses hohen Biomarkerpotentials und der großen Bedeutung eines umsichtigen klinischen Managements beim Prostatakarzinom wurde in der vorliegenden Arbeit die Rolle der CDO1-Promotormethylierung als prognostischer und prädikativer Biomarker für ein rezidivfreies Überleben bei Patienten mit Prostatakarzinom in zwei unterschiedlichen Kohorten überprüft.

1.2 Material und Methoden

Diese Studie wurde nach den Richtlinien der Deklaration von Helsinki in der derzeit gültigen Fassung durchgeführt. Die Studie wurde vom Institutional Review Board (IRB) der Universitätsklinik Bonn genehmigt (Nr.:071/14).

Die beiden voneinander unabhängigen Kohorten setzen sich aus einer Fall-Kontroll-Studie und der UKB-Kohorte zusammen. Die Fall-Kontroll-Studie setzt sich ihrerseits aus 66 Gewebeproben von Prostatektomiepräparaten, die sich gleichmäßig auf Karzinom-, Normal- (NAT) und Benigne Prostatahyperplasiegewebe (BPH) verteilen, zusammen. Zusätzlich wurden schockgefrorene Proben von Prostatakarzinom Gewebe und NAT nach chirurgischer Resektion von 16 Patienten mit Prostatakarzinom mit einbezogen. In die UKB-Kohorte wurden 300 Patienten einbezogen, die im Zeitraum von 2000 bis 2008 an der Universitätsklinik Bonn behandelt wurden und deren Probenmaterialien dem Institut für Pathologie der Universitätsklinik Bonn vorgelegen haben. Die mediane Nachbeobachtungszeit lag bei 63 Monaten und das mediane Alter der Patienten bei 65 Jahren (Tabelle 1) (Meller et al., 2016). Das biochemische Rezidiv wurde als Anstieg des PSA Wertes um mehr als 0,1ng/ml ausgehend vom Ausgangswert nach chirurgischer Resektion definiert. Zur Validierung der Ergebnisse aus der UKB-Kohorte wurde eine unabhängige Studie (TCGA-Kohorte) mit 498 Prostatakarzinom Patienten mit Nachbeobachtungs- und klinikopathologischen Daten hinzugezogen. Die Ergebnisse der TCGA-Kohorte, die hier gezeigt werden, basieren auf Daten die vom TCGA Research Netzwerk generiert wurden: <http://cancergenome.nih.gov/>.

Für die Methylierungsanalyse wurden formalinfixierte, in Paraffinblöcke eingebettete Gewebe entsprechend des InnuConvent Bisulfite All-In-One Kits bearbeitet (Holmes et al., 2014).

Der Methylierungsgrad der DNA von CDO1 wurde mit Hilfe einer quantitativen methylierungsspezifischen real time PCR der CDO1 Promotorregion analysiert. Zur Sequenzierung wurden zwei Proben-Paare gewählt, die jeweils spezifisch an die methylierten, bzw. unmethylierten Sequenzen binden. Für die immunhistochemische Untersuchung wurden Färbungen von Ki67, ERG und dem Androgenrezeptor im Immunhistochemischen Labor des Instituts für Pathologie der Universitätsklinik Bonn durchgeführt. In den Zellanalysen wurden sechs Prostatazelllinien (PC3, LNCaP, DUCaP, VCaP, DU145, 22Rv1) und die beiden nicht tumorösen Zelllinien HEK293T und BPH analysiert.

In der hier vorliegenden Arbeit lag der Schwerpunkt neben der Durchführung der quantitativen methylierungsspezifischen real time PCR insbesondere auf der Anlage und Durchführung der Zellkulturanalysen, sowie deren spätere Auswertung mittels mRNA Expressionsbestimmungen und deren statistischen Beurteilung.

Die CDO1 mRNA Expression wurde sowohl in den Zelllinien, als auch in schockgefrorenem Tumorgewebe, sowie in Normalgeweben gemessen. Die Gewinnung der Gesamt-RNA sowohl aus Zell-Pellets, als auch aus frischgefrorenen Geweben und deren Umwandlung mit Hilfe von Oligo-dT Primern zur einsträngigen cDNA stellte einen weiteren praktischen Schwerpunkt der Labortätigkeit im Rahmen dieser Arbeit dar.

Um die statistische Signifikanz zwischen CDO1 und klinikopathologischen Parametern zu bestimmen wurde der Student's t-Test durchgeführt. Zur bivariaten Korrelationsanalyse wurden der Pearson Korrelations Koeffizient, sowie Spearman's ρ genutzt. Hierbei wurde das biochemisch rezidivfreie Überleben definiert als Zeitspanne zwischen Prostatektomie und biochemischem Rezidiv bzw. letztem Kontakt mit dem Patienten. Hierfür wurden zunächst selbständige Datenbankanalysen der in der Pathologie der Universitätsklinik Bonn vorliegenden Patientendaten durchgeführt. Univariate Überlebensanalysen wurden mit univariaten Cox proportional Hazard und Kaplan-Meier Analysen durchgeführt. Die p-Werte beziehen sich jeweils auf den Wald-test und den log-rank Test. Zwei-seitige p-Werte wurden berechnet und ein p-Wert von 0,05 als statistisch signifikant angesehen.

1.3 Ergebnisse

Die Prostatakarzinomzelllinien PC3, LNCaP, DU145 und 22Rv1 wiesen ein hohes Methylierungslevel der CDO1-Promotorregion auf, wohingegen die ERG-Translokations positiven Ziellinien DUCap und VCap, sowie die benignen Zelllinien HEK293T und BPH-Zelllinien ein signifikant niedrigeres Methylierungslevel zeigen (Abbildung 1).

Die Expressionslevel der oben genannten Ziellinie korrelieren invers mit dem Methylierungsstatus ($\rho=-0,91$; $p=0,005$) der oben genannten Ziellinien. So zeigen die Prostatakarzinomzelllinien PC3, LNCaP DU145 und 22Rv1 keine mRNA Expression, wohin-gegen DUCap und VCap ein höheres Expressionslevel aufweisen (Abbildung 1).

Für die Analyse der mRNA Expression von CDO1 im Prostata Gewebe wurde eine real-time RT-PCR Analyse mit cDNA von 16 Patienten mit Prostatakarzinom durchgeführt. Hierfür wurde sowohl tumoröses, als auch angrenzendes Normalgewebe untersucht. Es zeigte sich, dass die CDO1 mRNA im tumorösem Gewebe im Vergleich zu angrenzendem Normalgewebe signifikant niedriger ($p=0,009$) ist. Diese inverse Korrelation zwischen CDO1 Expression und CDO1 Promotormethylierung konnte in der TCGA-Kohorte bestätigt werden. Mit Abnahme des Expressionslevels der CDO1 mRNA nimmt die CDO1 Promotor Methylierung zu ($\rho=-0,642$, $p<0,001$, ergänzende Abbildung 3).

Zusätzlich wurde das Methylierungslevel der CDO1 Promotorregion in einer Sammlung von 66 Prostatageweben von 25 Prostatakarzinom Patienten (24 tumoröse Gewebeproben, 23 angrenzende Normalgewebe und 19 Hyperplasie-Gewebe) untersucht. Auch hier zeigten sich in Übereinstimmung zu den Ergebnissen der TCGA-Kohorte signifikant erhöhte Methylierungslevel in tumorödem Gewebe (Mittelwert=32,3%; 95% CI [22,3-42,3%]) im Vergleich zu den Hyperplasie- (Mittelwert=1,9%; 95% CI [1,2-2,6%]) und Normalgeweben (Mittelwert=3,1%; 95% CI [1,3-4,9%]) (jeweils $p<0,001$, Abbildung 2). Hierbei zeigt sich kein signifikanter Unterschied in der CDO1-Promotormethylierung bei hyperplastischem und Normalgewebe.

Um abschließend den Zusammenhang zwischen der CDO1 Methylierung, klinikopathologischen Daten und dem biochemisch rezidivfreien Überleben zu untersuchen wurde eine komplett charakterisierte Prostatakarzinom-Patienten Kohorte untersucht. Das mediane Methylierungslevel der CDO1 Promotorregion beträgt 22% (Mittelwert=25%, 95% CI: [23,0-27,5%]). Als kontinuierliche Variabel korreliert die CDO1 Promotor Methylierung positiv mit dem ISUP-Score ($r=0,257$, $p<0,001$; $r=0,231$, $p<0,001$), dem pT-Stadium

($p=0,001$), sowie dem Proliferationsmarker Ki-67 ($r=0,216$, $p=0,006$). Zwischen dem präoperativem PSA-Level, dem Alter, dem Androgenrezeptorstatus, der ERG Translokation und der CDO1 Promotor Methylierung konnte keine Korrelation festgestellt werden (Tabelle 1). Die univariate Cox proportional Hazard Analyse zeigte eine starke Korrelation zwischen der CDO1 Promotor Methylierung und dem biochemisch rezidivfreien Überleben (BCR) ($p=0,002$; HR=1,02; 95% CI [1,01-1,03], Tabelle 2A). Für weitere Analysen wurde die CDO1 Methylierung anhand eines optimierten cut-off Wertes dichotomisiert und in zwei Gruppen mCDO1low (<29% Methylierung, $n=183$) und mCDO1high ($\geq 30\%$ Methylierung, $n=117$) unterteilt. In der univariaten Cox proportional Hazard Analyse zeigte eine hohe CDO1 Methylierung ein signifikant höheres Risiko für ein PSA-Rezidiv verglichen mit den Patienten mit einer geringen CDO1 Methylierung ($p=0,003$; HR=2,3, 95% CI [1,34-4,02]). Dieses Ergebnis wurde in einer Kaplan-Meier Analyse bestätigt ($p=0,002$; Figure 3). Des Weiteren wurde untersucht, ob sich der prognostische Wert von mCDO1 unterscheidet, wenn man den ERG Translokationstatus der Prostata Proben beachtet. Hierbei konnte für ERG Translokation negativen Proben ein zunehmender prognostischer Wert für mCDO1 beobachtet werden ($p=0,003$; HR=1,02, 95% CI [1,01-1,04]).

Bei ERG Translokations positiven Patienten-proben konnte mCDO1 keinen prognostischen Wert erreichen (Supplementary Figure 2). Diese Ergebnisse wurden in einer unabhängigen Kohorte (TCGA) validiert. Die mediane CDO1 Promotormethylierung der Prostatakarzinom Patienten bei der TCGA Kohorte lag bei 34%. Im Vergleich zur UKB-Kohorte wurden die Patienten weniger lange nachbeobachtet und waren jünger. Insbesondere wies die TCGA- Kohorte eine andere Verteilung des ISUP Grading auf (Table 1A). Dennoch konnte die Korrelation zwischen der CDO1 Promotor Methylierung und dem Gleason bzw. ISUP Gleason Grading ($r=0,185$, $p<0,001$ and $r=0,175$, $p>0,001$) sowie dem T-Stadium ($p=0,017$) bestätigt werden (Table 1). Eine univariate Cox proportional Hazard Analyse zeigte, dass eine signifikante Korrelation zwischen der CDO1 Promotormethylierung und dem BCR besteht ($p=0,032$, HR=1,02, 95% CI [1,00-1,03]) (Table 2B). Das Ergebnis wurde in einer Kaplan-Meier Analyse des BCR-freien Überlebens der Patienten, die nach CDO1 Methylierungslevel dichotomisiert ($p=0,044$) wurden, bestätigt.

Zusätzlich wurde eine Überlebens Analyse mit den CDO1 Transkriptom Daten der TCGA Prostatakarzinom Kohorte durchgeführt. Die erhöhte CDO1-Expression zeigt als kontinuierliche Variabel in einer univariaten Cox proportional Hazard Analyse einen Trend hin zu einer besseren Prognose ($p=0,072$; $HR=0,99$). Werden die Daten mit einem optimierten Cut-off Wert (CDO1_{low}, $n=310$; CDO1_{high}, $n=106$) dichotomisiert, so zeigt sich für die CDO1 Transkriptom Daten ein signifikant prognostischer Wert ($p=0,024$, $HR=0,377$, 95% CI [0,16-0,88]). In einer multivariaten Cox-Proportional-Hazards-Analyse einschließlich ISUP-Grading, Alter, prächirurgischen PSA-Level und dem TNM-Status, verpasste der dichotomisierte CDO1-mRNA-Level die statistische Signifikanz.

1.4 Diskussion

Zusammenfassend geht aus der vorliegenden Arbeit hervor, dass sowohl ein kürzeres biochemisch rezidivfreies Überleben, als auch eine höhere Aggressivität des Prostatakarzinoms in einem signifikanten Zusammenhang mit der Hypermethylierung der CDO1 Promotorregion stehen. Hierbei konnte gezeigt werden, dass die tumorspezifische Hypermethylierung zu einer Repression des CDO1 Gens führt.

In Zusammenschau mit der biologischen Bedeutung von CDO1 als Katalysator der Oxidation von Cystein zu Cysteinsäure (Maroney et al., 2007) und erhöhten Cystein Konzentration in Prostatakarzinomgewebe (Meller et al., 2016; Sreekumar et al., 2009) steht die Herunterregulierung der CDO1 Expression durch die Promotor Hypermethylierung in tumorösem Prostatagewebe in einem logischen Kausalzusammenhang.

Cystein seinerseits konnte im Serum und Urin mit einem Prostatakarzinom-Rezidiv in Verbindung gebracht werden (Stabler et al., 2011). Eine Hypermethylierung der CDO1 Promotorregion führt zu einer Verminderten Expression von CDO1, was wiederum die vorhandene Konzentration an Cystein erhöht, was seinerseits zu einer erhöhten Konzentration von Glutathion und damit einer erhöhten antioxidativen Kapazität des Prostatakarzinomgewebes führt.

An dieser Stelle lässt sich auch das hohe Signifikanzlevel zwischen der CDO1 Promotormethylierung und der ISUP Gleason Grading Gruppe erklären, da eine positive Korrelation zwischen dem Gleason Score und Hypoxiemarkern bereits gezeigt werden

konnte (Stewart et al., 2008) und Hypoxie zur Produktion von reaktiven Sauerstoffspezies führt.

Möglicherweise kann so die CDO1 Promotor Methylierung als prädiktiver Biomarker für eine Docetaxel-Behandlung bei Prostatakarzinom Patienten dienen. Docetaxel ist in den meisten Fällen die Erstlinientherapie beim kastrationsresistenten fortgeschrittenen Prostatakarzinom. Prädiktive Biomarker können hier Subgruppen von Patienten identifizieren, die von einer Kombinationstherapie aus Docetaxel und Hormontherapie profitieren würden. Docetaxel führt über Bildung von reaktiven Sauerstoffspezies zu einer endothelialen Dysfunktion (Cao et al., 2005; Hung et al., 2015; Mizumachi et al., 2008; Yang et al., 2015).

An dieser Stelle kann die niedrige CDO1 Methylierung als Marker für Patienten dienen, die aufgrund einer erhöhten antioxidativen Kapazität des Tumorgewebes von einer Therapie mit Docetaxel profitieren könnten. Um die biologische Signifikanz von CDO1 im Prostatakarzinom und die Eignung als prädiktiven Biomarker für ein Ansprechen auf eine solche Therapie zu klären werden weitere funktionelle Studien benötigt.

Eine weitere Rolle könnte die ERG Translation spielen. Durch die Methylierungslevel der untersuchten Ziellinie lässt sich ein möglicher Zusammenhang zwischen der ERG Translation und dem Methylierungslevel der Prostatazelllinien herstellen. Die Prostatakarzinomzelllinien mit positiver ERG Translation VCaP und DuCaP zeigen niedrige Methylierungslevel und damit eine erhöhte Expression von CDO1. Dennoch konnte keine Korrelation zwischen der ERG Expression und der Methylierung von CDO1 in den Prostatakarzinom-Kohorten gefunden werden. Der Zusammenhang zwischen der ERG Translation und der CDO1 Promotormethylierung stellt eine interessante Fragestellung für zukünftige Studien dar.

Die Einschränkungen der Studie liegen sicherlich darin, dass Prostatektomiepräparate und keine vitalen Gewebsflüssigkeiten oder frische Biopsate verwendet wurden. Die Daten der TCGA-Kohorte sind aufgrund einer geringen Nachbeobachtungsdauer limitiert und weisen vermutlich aufgrund dieser Tatsache einen geringeren prognostischen Wert, als die Daten der UKB-Kohorte auf.

1.5 Zusammenfassung

Die Bedeutung von molekularen Biomarkern spielt insbesondere bei Tumoren mit hohen Inzidenzen und einer gleichzeitig niedrigen Mortalität eine entscheidende Rolle. In dieser Arbeit konnte herausgearbeitet werden an welchen Stellen Biomarker beim Prostatakarzinom eine Rolle spielen. Hierfür wurde die Bedeutung von CDO1 als Biomarker analysiert und seine Rolle als prognostischer und prädikativer Biomarker für ein rezidivfreies Überleben bei Patienten mit Prostatakarzinom herausgearbeitet. Insbesondere die Expressionsanalysen der mRNA, sowie die Analyse der Promotormethylierung des potentiellen Biomarkers CDO1 standen im Vordergrund der vorgelegten Arbeit.

Zur Untersuchung des Biomarkerpotentials wurden sowohl Ziellinien, als auch in Paraffin eingebettete Prostatektomie-Präparate von 300 Patienten, die sich an der Universitätsklinik Bonn einer Operation unterzogen haben retrospektiv analysiert.

Zur Überprüfung und Validierung der Ergebnisse, die mittels univarianter und multivarianter Cox-Regression, sowie Kaplan-Meyer Analysen durchgeführt worden sind, wurden die Daten mit den bereits erhobenen Daten aus „The Cancer Genome Atlas“ (TCGA, n=498) herangezogen.

Es konnte gezeigt werden, dass die Promotorregion von CDO1 im Prostatakarzinomgewebe im Vergleich zum Normal- oder hyperplastischem Gewebe hypermethyliert ist ($p=0,001$). Eine Hypermethylierung korreliert dabei mit einer verminderten Gen-Expression. Gleichzeitig liegt eine signifikante Korrelation zwischen der CDO1 Hypermethylierung und dem biochemisch rezidivfreien Überleben vor.

Die Methylierung von CDO1 fungiert also als prognostischer Biomarker für ein rezidivfreies Überleben und kann dabei helfen die Patienten zu identifizieren, die von einer radikalen Therapie profitieren können.

In seiner Rolle als Katalysator für die Oxydation von Cystein zu Cysteinsäure und der damit im Zusammenhang stehenden antioxidativen Kapazität der Prostatakarzinomzelle könnte CDO1 auch eine Rolle als möglicher prädikativer Biomarker für das Ansprechen auf eine Therapie mit Chemotherapeutika, wie Docetaxel spielen.

1.6 Literaturverzeichnis der deutschen Zusammenfassung

Andresen K, Boberg KM, Vedeld HM, Hektoen M, Wadsworth CA, Lind GE. Novel target genes and a valid biomarker panel identified for cholangiocarcinoma. *Epigenetics* 2012

Bernard B, Sweeney CJ. Management of Metastatic Hormone-Sensitive Prostate Cancer. *Current Urology Reports*. 2015

Börno ST, Fischer A, Kerick M, Fälth M, Laible M, Schweiger MR. Genome-wide DNA methylation events in TMPRSS2-ERG fusion-negative prostate cancers implicate an EZH2-dependent mechanism with miR-26a hypermethylation. *Cancer Discov* 2012

Brait M, Ling S, Nagpal JK, Chang X, Park HL, Kim MS. Cysteine Dioxygenase 1 Is a Tumor Suppressor Gene Silenced by Promoter Methylation in Multiple Human Cancers. *PLoS One* 2012

Cao D, Qiao B, Ge Z, Yuan Y. Amplification loop cascade for increasing caspase activity induced by docetaxel. *J Cell Biochem* 2005

Castro F, Dirks WG, Fähnrich S, Hotz-Wagenblatt A, Pawlita M, Schmitt M. High-throughput SNP-based authentication of human cell lines. *Int J Cancer* 2013

Chai SC, Bruyere JR, Maroney MJ. Probes of the catalytic site of cysteine dioxygenase. *J Biol Chem* 2006

Deckers IAG, Schouten LJ, Van Neste L, Van Vlodrop IJH, Soetekouw PMMB, Van Engeland M. Promoter methylation of CDO1 identifies clear-cell renal cell cancer patients with poor survival outcome. *Clin Cancer Res* 2015

Dietrich D, Krispin M, Dietrich J, Fassbender A, Lewin J, Martens JWM. CDO1 Promoter Methylation is a Biomarker for Outcome Prediction of Anthracycline Treated, Estrogen Receptor-Positive, Lymph Node-Positive Breast Cancer Patients. *BMC Cancer* 2010

Holmes EE, Jung M, Meller S, Leisse A, Sailer V, Dietrich D. Performance evaluation of kits for bisulfite-conversion of DNA from tissues, cell lines, FFPE tissues, aspirates, lavages, effusions, plasma, serum, and urine. *PLoS One* 2014

Hung C-H, Chan S-H, Chu P-M, Tsai K-L. Docetaxel Facilitates Endothelial Dysfunction through Oxidative Stress via Modulation of Protein Kinase C Beta: The Protective Effects of Sotrastaurin. *Toxicol Sci* 2015

Jeschke J, O'Hagan HM, Zhang W, Vatapalli R, Calmon MF, Ahuja N. Frequent inactivation of Cysteine dioxygenase type 1 contributes to survival of breast cancer cells and resistance to anthracyclines. *Clin Cancer Res* 2013

Joseph CA, Maroney MJ. Cysteine dioxygenase: Structure and mechanism. *Chemical Communications*. 2007

Koch A, De Meyer T, Jeschke J, Van Criekinge W. MEXPRESS: Visualizing expression, DNA methylation and clinical TCGA data. *BMC Genomics* 2015

Meller S, Meyer H-A, Bethan B, Dietrich D, Maldonado SG, Kristiansen G. Integration of tissue metabolomics, transcriptomics and immunohistochemistry reveals *ERG*- and gleason score-specific metabolomic alterations in prostate cancer. *Oncotarget* 2016

Meller S, Zipfel L, Gevensleben H, Dietrich J, Ellinger J, Kristiansen G, Dietrich D. CDO1 promoter methylation is associated with gene silencing and is a prognostic biomarker for biochemical recurrence-free survival in prostate cancer patients. *Epigenetics* 2016

Mizumachi T, Suzuki S, Naito A, Carcel-Trullols J, Evans TT, Higuchi M. Increased mitochondrial DNA induces acquired docetaxel resistance in head and neck cancer cells. *Oncogene* 2008

Risbridger GP, Davis ID, Birrell SN, Tilley WD. Breast and prostate cancer: More similar than different. *Nature Reviews Cancer*. 2010

Sabharwal SS, Schumacker PT. Mitochondrial ROS in cancer: Initiators, amplifiers or an Achilles' heel? *Nature Reviews Cancer*. 2014

Satsu H, Terasawa E, Hosokawa Y, Shimizu M. Functional characterization and regulation of the taurine transporter and cysteine dioxygenase in human hepatoblastoma HepG2 cells. *Biochem J* 2003

Siegel RL, Miller KD, Jemal A. Cancer statistics, 2019. *CA Cancer J Clin* 2019

Sreekumar A, Poisson LM, Rajendiran TM, Khan AP, Cao Q, Chinnaiyan AM. Metabolomic profiles delineate potential role for sarcosine in prostate cancer progression. *Nature* 2009

Stabler S, Koyama T, Zhao Z, Martinez-Ferrer M, Allen RH, Bhowmick NA. Serum methionine metabolites are risk factors for metastatic prostate cancer progression. *PLoS One* 2011

Stewart GD, Gray K, Pennington CJ, Edwards DR, Riddick ACP, Habib FK. Analysis of hypoxia-associated gene expression in prostate cancer: Lysyl oxidase and glucose transporter-1 expression correlate with Gleason score. *Oncol Rep* 2008

Wu Q, Ni X. ROS-mediated DNA methylation pattern alterations in carcinogenesis. *Curr Drug Targets* 2015

Yamashita K, Waraya M, Sook Kim M, Sidransky D, Katada N, Watanabe M. Detection of methylated CDO1 in plasma of colorectal cancer; A PCR study. *PLoS One* 2014

Yang L, Zheng LY, Tian Y, Zhang ZQ, Dong WL, Cao C. C6 ceramide dramatically enhances docetaxel-induced growth inhibition and apoptosis in cultured breast cancer cells: A mechanism study. *Exp Cell Res* 2015

2. Publikation



View Article Online
Epigenetic regulation of gene expression and drug resistance in breast and ovarian
cancer (p. 871)
CDO1 promoter methylation and biochemical recurrence-free survival in prostate
cancer patients (p. 879)
Methylation DNA methylation in single nucleotide (p. 885)



ISSN: 1559-2294 (Print) 1559-2308 (Online) Journal homepage: <http://www.tandfonline.com/loi/kepi20>

CDO1 promoter methylation is associated with gene silencing and is a prognostic biomarker for biochemical recurrence-free survival in prostate cancer patients

Sebastian Meller, Lisa Zipfel, Heidrun Gevensleben, Jörn Dietrich, Jörg Ellinger, Michael Majores, Johannes Stein, Verena Sailer, Maria Jung, Glen Kristiansen & Dimo Dietrich

To cite this article: Sebastian Meller, Lisa Zipfel, Heidrun Gevensleben, Jörn Dietrich, Jörg Ellinger, Michael Majores, Johannes Stein, Verena Sailer, Maria Jung, Glen Kristiansen & Dimo Dietrich (2016) *CDO1* promoter methylation is associated with gene silencing and is a prognostic biomarker for biochemical recurrence-free survival in prostate cancer patients, *Epigenetics*, 11:12, 871-880, DOI: [10.1080/15592294.2016.1241931](https://doi.org/10.1080/15592294.2016.1241931)

To link to this article: <https://doi.org/10.1080/15592294.2016.1241931>



Accepted author version posted online: 30 Sep 2016.
Published online: 07 Nov 2016.



Submit your article to this journal [↗](#)



Article views: 311



View Crossmark data [↗](#)



Citing articles: 3 View citing articles [↗](#)

RESEARCH PAPER

***CDO1* promoter methylation is associated with gene silencing and is a prognostic biomarker for biochemical recurrence-free survival in prostate cancer patients**

Sebastian Meller^{a,*}, Lisa Zipfel^{a,*}, Heidrun Gevensleben^a, Jörn Dietrich^b, Jörg Ellinger^c, Michael Majores^d, Johannes Stein^c, Verena Sailer^{e,f}, Maria Jung^a, Glen Kristiansen^{a,#}, and Dimo Dietrich^{a,b,#}

^aUniversity Hospital Bonn, Institute of Pathology, Bonn, Germany; ^bDepartment of Otolaryngology, Head and Neck Surgery, University Hospital Bonn, Bonn, Germany; ^cDepartment of Urology, University Hospital Bonn, Bonn, Germany; ^dInstitute of Dermatopathology, Bonn, Germany; ^eDepartment of Pathology and Laboratory Medicine, New York Weill Cornell Medicine of Cornell University, NY, USA; ^fEnglander Institute for Precision Medicine, Weill Cornell Medicine of Cornell University New York, NY, USA

ABSTRACT

Molecular biomarkers may facilitate the distinction between aggressive and clinically insignificant prostate cancer (PCa), thereby potentially aiding individualized treatment. We analyzed *cysteine dioxygenase 1* (*CDO1*) promoter methylation and mRNA expression in order to evaluate its potential as prognostic biomarker. *CDO1* methylation and mRNA expression were determined in cell lines and formalin-fixed paraffin-embedded prostatectomy specimens from a first cohort of 300 PCa patients using methylation-specific qPCR and qRT-PCR. Univariate and multivariate Cox proportional hazards and Kaplan-Meier analyses were performed to evaluate biochemical recurrence (BCR)-free survival. Results were confirmed in an independent second cohort comprising 498 PCa cases. Methylation and mRNA expression data from the second cohort were generated by The Cancer Genome Atlas (TCGA) Research Network by means of Infinium HumanMethylation450 BeadChip and RNASeq. *CDO1* was hypermethylated in PCa compared to normal adjacent tissues and benign prostatic hyperplasia ($P < 0.001$) and was associated with reduced gene expression ($\rho = -0.91$, $P = 0.005$). Using two different methodologies for methylation quantification, high *CDO1* methylation as continuous variable was associated with BCR in univariate analysis (first cohort: HR = 1.02, $P = 0.002$, 95% CI [1.01–1.03]; second cohort: HR = 1.02, $P = 0.032$, 95% CI [1.00–1.03]) but failed to reach statistical significance in multivariate analysis. *CDO1* promoter methylation is involved in gene regulation and is a potential prognostic biomarker for BCR-free survival in PCa patients following radical prostatectomy. Further studies are needed to validate *CDO1* methylation assays and to evaluate the clinical utility of *CDO1* methylation for the management of PCa.

ARTICLE HISTORY

Received 13 June 2016
Revised 12 September 2016
Accepted 21 September 2016

KEYWORDS

Biomarker; prognosis; *CDO1*; cysteine dioxygenase 1; DNA methylation; prostate cancer

Introduction

Prostate cancer (PCa) is the most common cancer in the Western world among men. In the United States, 180,890 new cases and 26,120 tumor-related deaths have been predicted for 2016.¹ The high incidence coupled with a low mortality rate necessitates a careful clinical management in order to reduce mortality but avoid overtreatment. Despite the upsurge of novel molecular tests, therapeutic decisions are still and almost exclusively based on clinicopathological parameters. Given the commonly long natural course of PCa and the considerable morbidity of contemporary treatment options, therapy planning remains challenging, and additional information is highly desirable to estimate the biological potential of primary PCa.² Especially in low and intermediate risk cases (according to, e.g., D'Amico criteria), there is a pressing need for biomarkers that advocate either an active surveillance strategy or immediate active therapy.

So far, immunohistochemical biomarkers have not been proven successful and may not represent an ideal basis for a robust prognostic test,³ whereas nucleic acid-based biomarkers

appear more promising.⁴ Changes in DNA promoter methylation of human genes are of great potential to serve as biomarkers, as they are one of the most common epigenetic alterations in malignant tumors. Furthermore, DNA is highly stable and can be extracted from different materials, e.g., formalin-fixed paraffin-embedded (FFPE) tissues and body fluids.⁵ It has previously been shown that the methylation level of the *cysteine dioxygenase 1* (*CDO1*) promoter region is associated with metastasis in estrogen receptor-positive, lymph node-positive breast cancer patients receiving adjuvant anthracycline treatment.⁶ This result was confirmed in a second, independent study.⁷ Jeschke and colleagues⁷ could demonstrate that *CDO1* silencing contributes to reactive oxygen species (ROS) detoxification capacity and leads to a resistance against ROS-generating chemotherapeutics including anthracyclines. Only recently, another study reported that *CDO1* promoter hypermethylation has a prognostic value in primary breast cancer patients.⁸ Additional studies have shown hypermethylation of the *CDO1* promoter region in several solid tumors, such as esophageal, bronchial, urinary bladder, gastric, cholangiocarcinomas, or

colorectal carcinomas.⁹⁻¹¹ Moreover, a correlation between *CDO1* promoter hypermethylation and poor survival has been demonstrated in clear cell renal cell carcinoma patients.¹²

CDO1 catalyzes the first important step in the cysteine catabolism, such as the oxidation of cysteine to cysteine sulfinic acid, and plays a key role in the taurin biosynthesis pathway.¹³⁻¹⁵ Furthermore, *CDO1* has been suggested as a potential tumor suppressor gene.⁹ However, to date, the role of *CDO1* in PCa remains unclear. In the present study, *CDO1* methylation and mRNA expression levels were analyzed, and their suitability as prognostic biomarker was investigated in 2 independent cohorts (one from University Hospital Bonn, Germany and another from The Cancer Genome Atlas (TCGA-<http://cancergenome.nih.gov/>)).

Results

The analytical performance of the *CDO1* quantitative methylation (QM) qPCR assay was tested using a DNA methylation dilution series of bisulfite-converted artificially methylated and unmethylated DNA. The analytical performance of the assay was accurate, specific, and reproducible over the whole range of 0–100% DNA methylation (Supplementary Fig. S1).

Correlation of *CDO1* promoter methylation and mRNA expression in cell lines and prostatic tissue

The methylation status of the *CDO1* promoter in PCa cell lines (PC3, LNCaP, DUCaP, VCaP, DU145, 22Rv1) and in non-tumorigenic cell lines (HEK293T and BPH) was examined. High *CDO1* promoter methylation was observed in the cancer cell lines PC3 (88%), LNCaP (85%), DU145 (97%), and 22Rv1 (90%), whereas the *ETS*-related gene (*ERG*) translocation-positive PCa cell lines DUCaP (46%) and VCaP (37%), as well as

the benign cell lines HEK293T (50%) and BPH (35%) showed a significantly lower level of *CDO1* promoter methylation (Fig. 1). Furthermore, the transcriptional level of *CDO1* mRNA in the aforementioned cell lines was examined by means of real-time RT-PCR. No expression of *CDO1* mRNA was detectable in the cancer cell lines PC3, LNCaP, DU145, and 22Rv1, whereas higher expression levels were observed in DUCaP and VCaP cells, as well as in the benign BPH cell line. HEK293T cells showed a weak *CDO1* mRNA expression (Fig. 1). The expression levels inversely correlated with the methylation status ($\rho = -0.91$, $P = 0.005$).

To examine the expression of *CDO1* mRNA in prostate tissue, real-time RT-PCR analysis of cDNAs derived from cancerous and normal adjacent tissue (NAT) from 16 PCa patients was performed. *CDO1* mRNA was shown to be downregulated significantly in the cancerous tissue compared to the NAT specimens ($P = 0.003$, Fig. 2a). The inverse correlation between *CDO1* mRNA expression and *CDO1* promoter methylation was confirmed in the PCa patient cohort from the TCGA Research Network ($n = 498$). The expression levels of *CDO1* mRNA decreased with increasing *CDO1* promoter methylation ($\rho = -0.642$, $P < 0.001$, Supplementary Fig. S2). Furthermore, *CDO1* mRNA expression was shown to be significantly higher in normal prostate tissue compared to the cancerous tissue ($P < 0.001$, Fig. 2b).

CDO1 promoter hypermethylation in prostate cancer compared to normal adjacent tissue and benign prostatic hyperplasia

In a pilot study, methylation levels of the *CDO1* promoter region were analyzed in 66 prostate tissue samples from 24 PCa patients [24 cancer samples, 23 NAT specimens, and 19 tissue samples with benign prostatic hyperplasia (BPH)]. *CDO1*

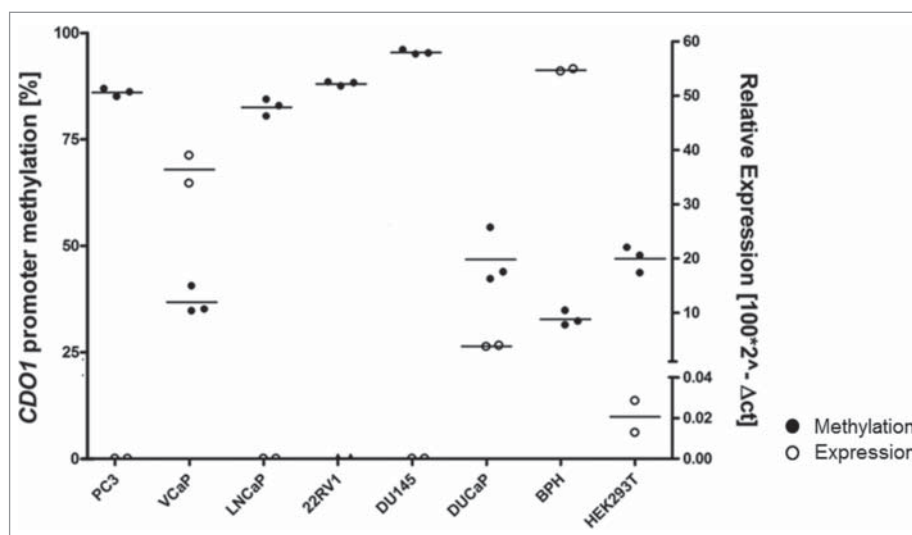


Figure 1. *CDO1* promoter methylation and mRNA expression in cell lines. Comparison of *CDO1* promoter methylation and mRNA expression in prostate cancer cell lines, a benign hyperplasia prostate cell line (BPH), and a benign human embryonic kidney cell line (HEK293T). Left Y-axis and black dots illustrate a high *CDO1* promoter methylation in the *ERG* translocation-negative prostate cancer cell lines PC3, LNCaP, 22Rv1, and DU145, whereas the *ERG* translocation-positive prostate cancer cell lines VCaP and DUCaP as well as the benign cell lines showed a markedly reduced *CDO1* promoter methylation. DNA methylation measurements were performed in 3 biological replicates. Each biological replicate was analyzed in triplicate measurement. Right Y-axis and open circles illustrate that only the VCaP, DUCaP, BPH, and HEK293T cell lines showed a detectable *CDO1* mRNA expression. Expression and methylation of *CDO1* correlated inversely. Expression measurements were performed in 2 biological replicates. Each biological replicate was analyzed in triplicate measurement.

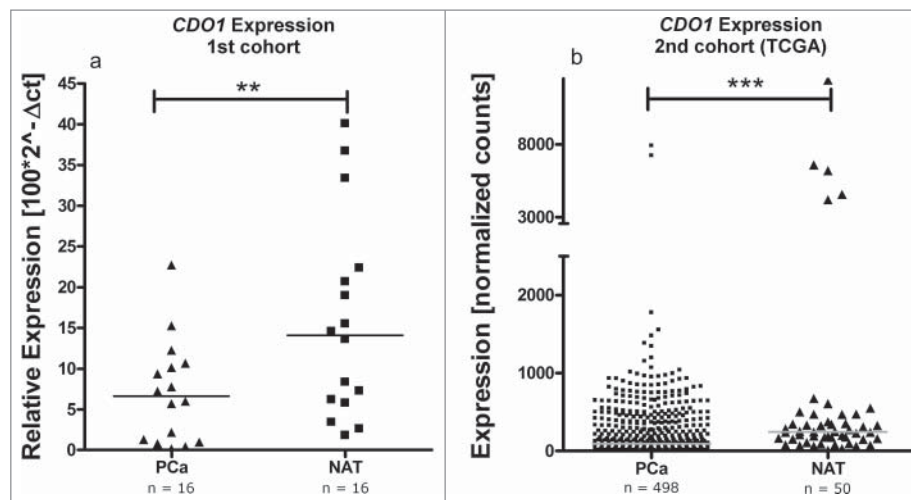


Figure 2. *CDO1* mRNA expression in prostate cancer and normal adjacent tissue. A: In the first cohort, 16 prostate cancer (PCa) samples were compared with corresponding normal adjacent tissue (NAT). B: In the second (TCGA) cohort, 498 prostate cancer samples were compared to 50 NAT samples. *CDO1* mRNA expression in prostate cancer tissue was significantly lower compared to corresponding normal adjacent tissues. *P*-values refer to Wilcoxon–Mann–Whitney test (** refers to *P*-values < 0.01, *** *P*-value < 0.01).

methylation levels were significantly higher in the carcinomatous tissues (mean = 32.3%; 95% CI [22.3–42.3%]) compared to BPH (mean = 1.9%; 95% CI [1.2–2.6%]) and NAT samples (mean = 3.1%; 95% CI [1.3–4.9%]; *P* < 0.001 each, Fig. 3a). *CDO1* promoter methylation did not differ significantly between hyperplastic and normal prostate tissue. Data from the TCGA cohort (498 cancer samples, 50 NAT specimens) confirmed that *CDO1* methylation was significantly higher in cancerous tissue compared to normal prostate tissue (*P* < 0.001, Fig. 3b).

Association of *CDO1* methylation with clinicopathological parameters and BCR-free survival

Tissue samples from a first cohort of 300 PCa patients after radical prostatectomy were analyzed. Androgen receptor (AR) and Ki-67 expression of this cohort have previously

been reported.^{16,17} ERG expression was assessable for 211 patient samples and resulted in 65 (30.8%) ERG-positive and 146 (69.2%) ERG-negative specimens. Tissue samples were further analyzed for *CDO1* promoter methylation. The median *CDO1* methylation was 22.3% (mean = 25%, 95% CI: [23.0–27.5%]) with a range from 0% to 88% (25% percentile: 7.1%, 75% percentile: 39.4%). As continuous variable, *CDO1* promoter methylation positively correlated with the International Society of Urological Pathology (ISUP) Gleason Grading Groups¹⁸ (*r* = 0.231, *P* < 0.001), pT-category (*P* = 0.003, Wilcoxon–Mann–Whitney test), and the proliferation marker Ki-67 (*r* = 0.216, *P* = 0.006; Table 1) However, pre-surgical prostate-specific antigen (PSA) levels, age, AR, and ERG expression did not correlate with *CDO1* promoter methylation (Table 1).

Follow-up information was available for 260 of the 300 patients of the first cohort. Univariate Cox proportional hazard

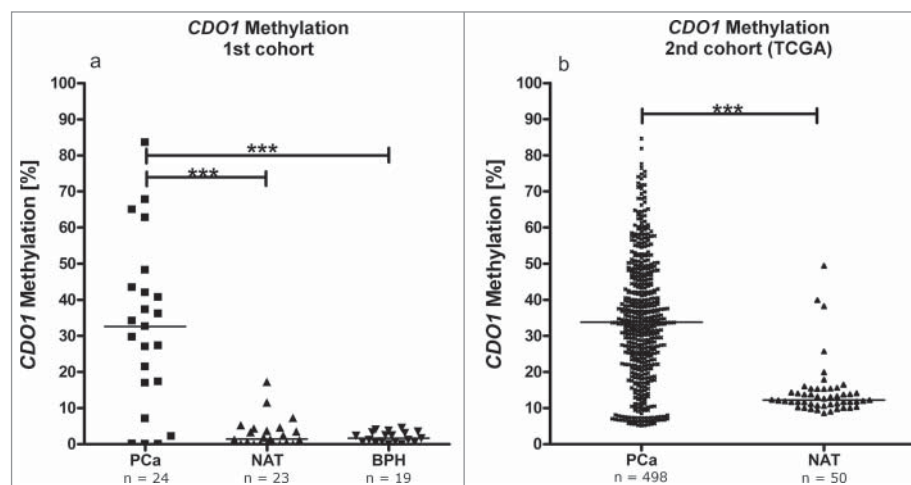


Figure 3. *CDO1* promoter methylation in prostate cancer and normal adjacent tissue. A: In a pilot study, 24 prostate cancer (PCa) samples were compared to 23 normal adjacent (NAT) and 19 benign hyperplasia (BPH) tissue samples. B: In a second (TCGA) cohort, 498 prostate cancer samples were compared to 50 normal adjacent tissue samples. *CDO1* promoter methylation in prostate cancer tissue was significantly higher compared to corresponding normal adjacent and benign prostate hyperplasia tissue. *P*-values Wilcoxon–Mann–Whitney test (***) refers to *P*-values < 0.001).

Table 1. Associations/correlations of *CDO1* promoter methylation with clinicopathological parameters in 2 independent cohorts of prostate cancer patients. The associations/correlations of percentage *CDO1* methylation with the following clinicopathological parameters were tested with Pearson correlation: age (continuous), pre-surgical PSA (continuous), ISUP Gleason grading group (1–5), Ki-67 (continuous), AR (weak/negative, moderate, strong); ERG expression (negative vs. positive) and pT category (pT2 vs. pT3) were tested using Wilcoxon–Mann–Whitney test.

	First cohort				Second cohort					
	Patients [n]	Median mCDO1 [%]	P-value	mCDO1low	mCDO1high	Patients [n]	Median mCDO1 [%]	P-value	mCDO1low	mCDO1high
Patients [n]	300	22.0		183 (61.0%)	117 (39.0%)	498	33.9		252 (50.6%)	246 (49.4%)
Patients with follow up	260					417				
Mean/median follow-up [months]	66/63					22/16				
Range [months]	0–145					1–113				
Age			0.55 [¥]					0.009 [¥]		
≤60 [years]	75 (25.1%)			57 (76.0%)	18 (24.0%)	224 (45.0%)			121 (54.0%)	103 (46.0%)
>60 [years]	224 (74.9%)			126 (56.3%)	98 (43.8%)	274 (55.0%)			131 (47.8%)	143 (52.2%)
Pre-surgical PSA (ng/ml)			0.40 [¥]					0.003 [¥]		
0–4	27 (9.4%)	17.5		19 (70.4%)	8 (29.6%)	53 (10.7%)	34.6		25 (47.2%)	28 (52.8%)
4–10	173 (60.3%)	22.1		101 (58.4%)	72 (41.6%)	286 (57.8%)	33.1		154 (53.8%)	132 (46.2%)
>10	87 (30.3%)	22.4		56 (64.4%)	31 (27.9%)	156 (31.5%)	36.7		72 (46.2%)	84 (53.8%)
pT category			0.003 [*]					0.011 [*]		
pT2	206 (68.7%)	20.2		136 (66.0%)	70 (33.9%)	351 (86.5%)			189 (53.8%)	162 (46.2%)
pT3	94 (31.3%)	29.1		47 (50.0%)	47 (50.0%)	55 (13.5%)			21 (38.2%)	34 (61.8%)
ISUP Gleason grading group [†]			<0.001 [¥]					<0.001 [¥]		
1 (<7)	163 (56.2%)	17.6		113 (69.3%)	50 (30.7%)	45 (9.0%)	24.9		32 (71.1%)	13 (28.9%)
2 (3+4)	53 (18.3%)	23.3		32 (60.4%)	21 (39.6%)	147 (29.5%)	33.2		78 (53.1%)	69 (46.9%)
3 (4+3)	23 (7.9%)	31.6		10 (43.5%)	13 (56.5%)	101 (20.3%)	33.7		52 (51.5%)	49 (48.5%)
4 (=8)	35 (12.1%)	30.7		16 (45.7%)	19 (54.3%)	64 (12.9%)	35.2		30 (46.9%)	34 (53.1%)
5 (>8)	16 (5.5%)	34.1		5 (31.3%)	11 (86.8%)	141 (28.3%)	36.8		60 (42.6%)	81 (57.4%)
ERG expression			0.70 [*]							
Negative	146 (48.7%)	26.5		78 (53.4%)	68 (46.6%)					
Positive	65 (21.7%)	27.5		33 (50.8%)	32 (49.2%)					
Unknown	89 (29.7%)	11.5		72 (80.9%)	17 (19.1%)					
Ki67										
Weak/negative	110 (67.5%)		0.006 [¥]	70 (63.6%)	40 (36.4%)					
Moderate	45 (27.6%)			24 (53.3%)	21 (46.7%)					
Strong	8 (4.9%)			2 (25.0%)	6 (75.0%)					
AR										
Weak/negative	12 (7.4%)		0.064 [¥]	4 (33.3%)	8 (66.7%)					
Moderate	34 (20.9%)			19 (55.9%)	15 (44.1%)					
Strong	117 (71.8%)			73 (62.4%)	44 (37.6%)					

*Wilcoxon–Mann–Whitney test.

¥ Pearson correlation.

† Numbers in brackets refer to traditional Gleason scores.

Table 2. Univariate and multivariate Cox proportional hazard analyses of BCR-free survival in the first cohort of prostate cancer patients ($n = 260$) after radical prostatectomy. DNA methylation was quantified by means of quantitative methylation real-time PCR.

Clinicopathological parameter / biomarker	Univariate Cox		Multivariate Cox	
	Hazard ratio [95% CI]	P-value	Hazard ratio [95% CI]	P-value
Tumor stage (pT3 and pT4 vs. pT2)	2.60 [1.51–4.49]	<0.001	1.19 [0.61–2.32]	0.62
ISUP grading group	2.00 [1.63–2.42]	<0.001	1.99 [1.56–2.49]	<0.001
Surgical margin (R1 vs. R0)	2.46 [1.41–4.29]	0.002	1.43 [0.75–2.74]	0.27
Nodal status (pN1 vs. pN0)	1.68 [0.67–4.22]	0.27	0.42 [0.14–1.31]	0.13
Pre-surgical PSA level	1.01 [1.00–1.02]	0.11	1.00 [0.83–1.00]	0.86
ERG expression (ERG-positive vs. ERG-negative)	0.78 [0.40–1.51]	0.46	0.95 [0.46–1.99]	0.90
Age	1.01 [0.96–1.06]	0.70	1.00 [0.93–1.05]	0.71
<i>CDO1</i> methylation (continuous variable)	1.02 [1.01–1.03]	0.002	1.01 [1.00–1.03]	0.15
<i>CDO1</i> methylation (<i>mCDO1_{high}</i> vs. <i>mCDO1_{low}</i>)	2.32 [1.34–4.02]	0.003	#	#

CDO1 methylation as dichotomized variable was not included in the multivariate Cox proportional hazard analysis.

analysis showed a strong association between *CDO1* promoter methylation (as continuous variable) and biochemical recurrence (BCR)-free survival ($P=0.002$, hazard ratio (HR) = 1.02, 95% CI [1.01–1.03], Table 2). *CDO1* promoter methylation levels dichotomized at the median revealed a significant prognostic value in Kaplan-Meier ($P = 0.011$) and univariate Cox proportional hazard analysis ($P = 0.013$, HR = 2.07, 95% CI [1.17–3.67]). Using an optimized cut-off, *CDO1* promoter methylation was further dichotomized into *mCDO1_{low}* (<30% methylation, $n = 161$) and *mCDO1_{high}* (>30% methylation, $n = 99$) groups. In univariate Cox proportional hazards analysis, high *CDO1* promoter methylation showed a significantly higher risk for PSA recurrence compared to patients with low *CDO1* promoter methylation ($P = 0.003$, HR = 2.32, 95% CI [1.34–4.02]). This finding was confirmed in a Kaplan-Meier analysis (Fig. 4a, $P=0.002$; median BCR-free survival for *mCDO1_{low}*: 68.8 months and for *mCDO1_{high}*: 60.6 months). In a multivariate survival analysis including age, TNM, surgical margin, ISUP grading group, ERG-status, and pre-surgical PSA, however, *CDO1* methylation failed to qualify as independent prognostic factor (Table 2).

Results were validated in an independent second cohort including PCa patients from the TCGA Research Network ($n = 498$). In this cohort, the median *CDO1* promoter methylation was 34% (mean = 34.1%) with a range from 5% to 85% (25% percentile: 22.2%, 75% percentile: 46.3%). Compared to the first cohort, patients from the second cohort were younger and a shorter follow-up period was available (follow-up data available for 417 patients). Furthermore, the distribution of the ISUP grading group was notably different (Table 1). However, correlations between *CDO1* promoter methylation and the ISUP Gleason Grading Group ($r = 0.175$, $P < 0.001$) as well as the T-category ($P = 0.011$) were confirmed (Table 1).

Additionally, correlations between *CDO1* methylation and age ($r = 0.117$, $P = 0.003$) as well as the pre-surgical PSA level ($r = 0.132$; $P = 0.003$) were observed (Table 1). Univariate Cox proportional hazards analysis revealed a significant correlation between *CDO1* promoter methylation (as continuous variable) and BCR ($P = 0.032$, HR = 1.02, 95% CI [1.00–1.03]) (Table 3). Due to the different methodology used for methylation quantification and the different clinicopathological characteristics of the TCGA cohort, a new optimized cut-off for dichotomizing

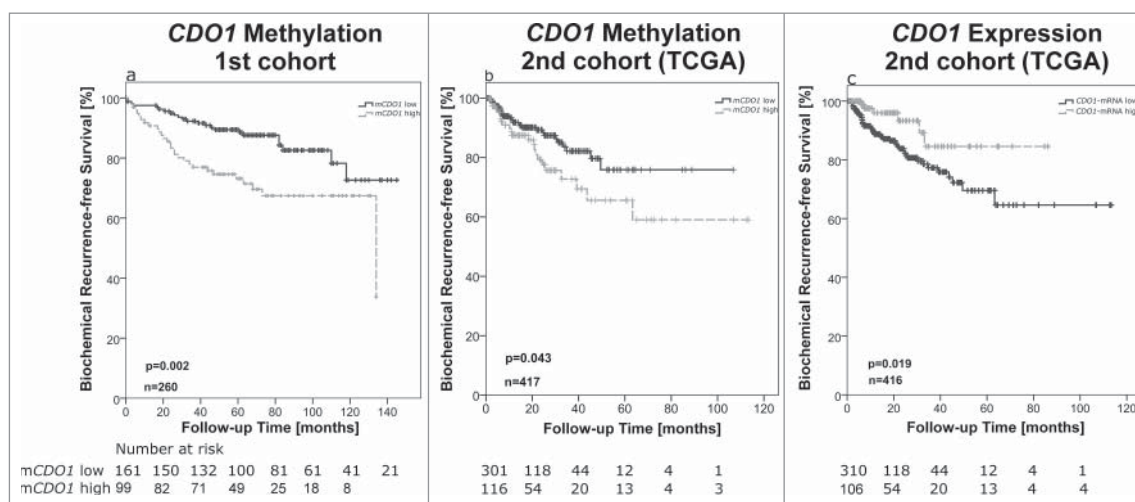


Figure 4. Kaplan-Meier analysis of BCR-free survival in prostate cancer patients. A: *CDO1* promoter methylation was dichotomized into *mCDO1_{low}* (<30% methylation, $n = 161$) and *mCDO1_{high}* (>30% methylation, $n = 99$) groups. In a first cohort comprised of 260 prostate cancer patients from the University Hospital Bonn, a significant association between *CDO1* promoter hypermethylation and BCR-free survival after radical prostatectomy was observed. B: In 417 prostate cancer patients from the TCGA cohort, the prognostic value of *CDO1* methylation was confirmed. *CDO1* promoter methylation was dichotomized into *mCDO1_{low}* (<43% methylation, $n = 301$) and *mCDO1_{high}* (>43% methylation, $n = 116$) groups. C: The expression value of *CDO1* mRNA also showed a significant prognostic value in prostate cancer patients from the TCGA cohort. *CDO1* expression was dichotomized into *CDO1-mRNA_{low}* ($n = 310$) and *CDO1-mRNA_{high}* ($n = 106$) groups.

Table 3. Univariate and multivariate Cox proportional hazard analyses of BCR-free survival in the second (TCGA) cohort of prostate cancer patients (n = 410) after radical prostatectomy. DNA methylation was quantified by means of the Infinium HumanMethylation450 BeadChip.

Clinicopathological parameter / biomarker	Univariate Cox		Multivariate Cox	
	Hazard ratio [95% CI]	P-value	Hazard ratio [95% CI]	P-value
Tumor stage (pT3 and pT4 vs. pT2)	4.25 [2.37–7.61]	<0.001	2.49 [1.30–4.79]	0.006
ISUP grading group	1.69 [1.34–2.13]	<0.001	1.54 [1.17–2.02]	0.002
Surgical margin (R1 vs. R0)	1.49 [0.87–2.56]	0.15	0.89 [0.45–1.77]	0.73
Nodal status (pN1 vs. pN0)	1.84 [1.00–3.36]	0.048	1.41 [0.73–2.73]	0.31
Pre-surgical PSA level	1.04 [1.02–1.05]	<0.001	1.02 [1.00–1.04]	0.060
ERG expression (ERG-positive vs. ERG-negative)	N/A			
Age	1.02 [0.98–1.06]	0.39	1.01 [0.96–1.05]	0.82
<i>CDO1</i> methylation (continuous variable)	1.02 [1.00–1.03]	0.032	1.01 [0.99–1.03]	0.38
<i>CDO1</i> methylation (<i>mCDO1_{high}</i> vs. <i>mCDO1_{low}</i>)	1.73 [1.01–3.00]	0.046	#	#
<i>CDO1</i> mRNA (continuous variable)	0.99 [0.99–1.00]	0.074	#	#
<i>CDO1</i> mRNA (<i>mCDO1_{high}</i> vs. <i>mCDO1_{low}</i>)	0.38 [0.16–0.88]	0.024	#	#

Variables were not included in the multivariate Cox proportional hazard analysis.

CDO1 promoter methylation was introduced, which allocated patients to *mCDO1_{low}* (<44% methylation, n = 301) and *mCDO1_{high}* (>44% methylation, n = 116) groups. In univariate Cox proportional hazards analysis high *CDO1* promoter methylation showed a significantly higher risk for PSA recurrence compared to patients with low *CDO1* promoter methylation ($P = 0.046$, HR = 1.73, 95% CI [1.01–2.96]). This finding was confirmed in a Kaplan-Meier analysis of BCR-free survival in patients stratified by *CDO1* methylation levels ($P = 0.043$, Fig. 4b).

Additionally, survival analyses with *CDO1* transcriptome data (RNA-Seq V2) from the TCGA PCa patient series were performed. In univariate Cox proportional hazards analysis, elevated *CDO1* mRNA expression (as continuous variable) showed a trend toward a favorable prognosis ($P = 0.072$, HR = 0.99, 95% CI [0.99–1.00], Table 3). After dichotomization using an optimized cut-off (*CDO1_{low}*, n = 310; *CDO1_{high}*, n = 106), *CDO1* mRNA expression levels assessed by RNA-Seq analysis qualified as a significant prognostic factor ($P = 0.024$, HR = 0.38, 95% CI [0.16–0.88], Fig. 4c and Table 3). However, in a multivariate Cox proportional hazards analysis including ISUP grading group, age, pre-surgical PSA level, and TNM categories, dichotomized *CDO1* mRNA levels failed to reach statistical significance.

Discussion

In the present study, hypermethylation of the *CDO1* promoter region was demonstrated to be significantly associated with BCR and aggressive tumor behavior in a population-based prostatectomy cohort. Aberrant hypermethylation was further shown to be tumor-specific and to associate with *CDO1* gene silencing. These results were confirmed in an independent PCa patient cohort from the TCGA Research Network. The biomarker's excellent performance is supported by the fact that it was substantiated using 2 different technologies (methylation-specific qPCR / first cohort, Infinium HumanMethylation450 / second cohort). However, in multivariate survival analysis including Gleason Grading Group, pre-surgical PSA level, and TNM categories, only the Gleason Group remained a statistically significant prognostic parameter. Accordingly, *CDO1* methylation and mRNA expression failed to qualify as independent prognostic factors.

CDO1 catalyzes the oxidation of cysteine to cysteine sulfonic acid (CSA).¹⁴ In 2 large metabolome studies, cysteine levels in PCa were shown to be significantly higher compared to NAT specimens.^{19,20} Downregulation of *CDO1* expression by promoter hypermethylation in cancerous prostate tissue compared to NAT is therefore entirely in line with results taken from the metabolome data. However, functional analyses are required to elucidate whether *CDO1* is under direct epigenetic control via DNA methylation or if the association of methylation and reduced transcription is due to an indirect effect. In serum and urine, levels of cysteine were shown to be associated with PCa recurrence.²¹ This is in keeping with the presented data, which show that *CDO1* hypermethylation in PCa associates with BCR. Since *CDO1* methylation positively correlates with aggressive tumor behavior, hypermethylation and subsequent repression of *CDO1* could lead to elevated cysteine levels.^{22,23} Cysteine further is a source for the biosynthesis of glutathione,^{24,25} a major antioxidant molecule which is decreased in the presence of *CDO1*.²³ In a previous study, glutathione was significantly increased in PCa compared to NAT.¹⁹ This suggests that *CDO1* is able to reduce antioxidant capacity.⁷ In contrast, epigenetic *CDO1* gene silencing in PCa may foster the ability of cancer cells to adapt to oxidative stress by enhancing the antioxidant capacity.⁷ This might explain the highly significant correlation between *CDO1* promoter methylation and the ISUP Gleason Grading Group, since the Gleason Score has already been shown to correlate with hypoxia markers,²⁶ and hypoxia leads to a production of reactive oxygen species (reviewed in²⁷). High-grade PCa cells might therefore potentially benefit from a downregulation of *CDO1* and a consequently enhanced antioxidant capacity. These data indicate that epigenetic *CDO1* gene silencing might be partly driven by increased ROS levels in cancer cells to enhance their antioxidant capacity. Moreover, *CDO1* promoter methylation might potentially serve as predictive biomarker for docetaxel (DTX) treatment in PCa patients. DTX is mainly applied as first line chemotherapy in patients with castration-resistant, advanced PCa. In a large clinical trial, DTX in combination with androgen deprivation therapy (ADT) has recently shown promising results in patients with metastatic, hormone-sensitive tumors.²⁸ Predictive biomarkers might help to identify subgroups of patients who benefit from an addition of DTX to ADT. One molecular mechanism of DTX causing endothelial dysfunction

is DTX-induced ROS formation.^{29–33} Here, low *CDO1* methylation may be a useful marker to stratify patients for DTX treatment comparable to anthracycline treatment in breast cancer patients.⁷ However, this is highly speculative and further studies are needed to test this hypothesis.

ERG translocation may lead to demethylation or inhibition of *CDO1* hypermethylation as suggested by methylation levels of the prostatic cell lines. Only the benign BPH cell line and the malignant *ERG* translocation-positive VCaP and DUCaP cell lines showed strongly reduced methylation levels and a subsequently higher expression of *CDO1*, whereas all other PCa cell lines exhibited high *CDO1* methylation levels and complete silencing of the gene. However, no correlation between *ERG* expression and *CDO1* methylation could be found in the PCa patient cohort. Possibly, within the physiological context, a lower methylation of the *CDO1* promoter in *ERG* translocation-positive patients is in some cases mimicked by a ROS driven hypermethylation. Thus, in statistical analyses, a correlation between *ERG* translocation and lower *CDO1* promoter methylation is lost due to too low sample numbers. Börno et al. reported that *ERG*-negative samples show significantly higher numbers of differentially methylated regions compared to *ERG*-positive or normal samples.³⁴ This is in line with the shown methylation data from cell lines. Additionally, other studies demonstrated that ROS-induced oxidative stress is involved in site-specific hypermethylation of promoter regions of tumor suppressor genes (reviewed in³⁵).

However, a few limitations of the study need to be mentioned. A major limitation of this retrospective study is the use of radical prostatectomy specimens. Further studies will have to analyze the prognostic value of *CDO1* promoter methylation in (pre-operative) biopsies and/or liquid biopsies (circulating tumor cells/free DNA) of PCa patients, and ultimately a prospective validation of its suitability as a prognostic biomarker for treatment planning is needed. Furthermore, the cut-offs used for dichotomization of *CDO1* promoter methylation ought to be validated in independent cohorts. While the use of 2 different methodologies for methylation analyses strengthen the evidence of the prognostic value of *CDO1* methylation on the one hand, a short-term implementation of a respective biomarker test into clinical routine is impeded, and an additional clinical and analytical performance evaluation is required. Furthermore, the fact that *CDO1* methylation did not qualify as independent prognostic factor in multivariate analyses lowers its potential utility as a clinically useful test. Currently, no prognostic methylation biomarkers for PCa patients are applied in clinical routine. However, several sound studies have suggested promising prognostic methylation markers such as *PITX2*,^{36,37} the methylation panel *AOX1/C1orf114/HAPLN3*,³⁸ or *GABRE~miR-452~miR-224*³⁹ promoter hypermethylation (for review see⁴⁰). A limitation of the TCGA data employed in this study was the relatively short follow-up, which might explain the decreased prognostic value compared to the patients included in the first cohort.

In summary, the association of *CDO1* promoter methylation with downregulation of the respective transcript and the correlation with an adverse prognosis for PCa patients both underline the biological relevance of *CDO1* as a potential tumor suppressor gene. Further studies on a functional level are

indispensable to evaluate the potential biological significance of *CDO1* in PCa and its suitability as a predictive biomarker for response to DTX treatment.

Materials and methods

Ethics statement

The present study was approved by the Institutional Review Board of the University Hospital of Bonn, Germany (vote no. 071/14), which waived the need for written informed consent from the participants. All experiments were performed in accordance with the relevant guidelines and regulations.

Patients

Pilot study: A case control group with 66 tissue samples from 24 radical prostatectomy specimens including 24 PCa, 23 NAT, and 19 BPH tissue samples was included. In addition, fresh frozen tumor and NAT obtained from 16 PCa patients were included.

First cohort: The first arm of the study enclosed 300 patients who had undergone radical prostatectomy for clinically organ-confined PCa in the surgical center at the University Hospital Bonn, Germany between 2000 and 2008. To avoid a selection bias, all available tissue samples were taken in consecutive order. A total of 163 (54.3%), 76 (25.3%), and 53 (17.7%) patients had a Gleason score of <7, =7, and >7, respectively. Median follow-up time after radical prostatectomy was 63 months (range 0 to 145 months) and the median age was 65 y (range 45 to 83 years; Table 1). BCR was defined by post-surgical PSA levels exceeding 0.2 ng/mL from nadir and was assessable for 277 patients. During the observation time, 54 (19.5%) patients suffered from BCR after a median time of 26 months after prostatectomy.

Second cohort: For confirmation of the results from the first cohort, an independent series of 498 PCa patients with complete follow-up and clinicopathological data was evaluated. The results from the validation cohort shown here are entirely based upon data generated by the TCGA Research Network (<http://cancergenome.nih.gov/>). Overall, a Gleason score of <7, 7, and >7 was recorded for 45 cases (9.0%), 250 cases (50.2%), and 205 cases (41.2%), respectively. The median follow-up time after prostatectomy was 16 months. Within the observation time, 58/431 (13.5%) patients suffered from BCR after a median time of 16 months, and 8/498 (1.6%) patients died after a median time of 11 months.

Sample preparation and bisulfite conversion

For methylation analysis, FFPE specimens were processed using the InnuCONVERT Bisulfite All-In-One Kit (Analytik Jena, Germany) as previously described.⁵

For analytical performance evaluation of the assay, a dilution series of bisulfite-converted artificially methylated DNA (CpGenome™ Universal Methylated DNA; Merck Millipore, Darmstadt, Germany) and unmethylated DNA (peripheral blood lymphocytes (PBL) DNA, Roche Applied Science, Mannheim, Germany) was used. UV spectrophotometry was

carried out using a Nanodrop ND-1000 spectral photometer (Nanodrop Technologies, Wilmington, DE, USA). For calculation of the DNA concentration, the multiplication factor 33 was used for single-strand DNA (bisulfite DNA).

Quantification of *CDO1* DNA methylation

Quantitative methylation-specific qPCR: The DNA methylation of *CDO1* was analyzed by a QM real-time PCR assay located in the putative *CDO1* promoter region. The assay was performed using an AB 7500 Fast Real-Time PCR System (Life Technologies Corporation, Carlsbad, CA, USA). A region of the *CDO1* promoter within the CpG island was amplified by one pair of methylation-unspecific primers (Supplementary Fig. 3). By means of 2 probes that bind specifically and competitively to methylated (*CDO1*-P-M) and unmethylated (*CDO1*-P-U) alleles, respectively, the methylation of this region was quantified accurately in a single-tube PCR reaction. Primer and probe sequences are given in Supplementary Tab S1. Thermal cycling was initiated with a first denaturation step at 95°C for 15, min followed by 45 cycles of 95°C for 15 s, 60°C for 2 s, and 55°C for 60 s. All reactions were performed in triplicates applying 25 ng bisulfite converted template DNA. Methylation values for each sample were determined using $\Delta\Delta CT$ method: $\Delta CT = CT_{CDO1-P-U} - CT_{CDO1-P-M}$, $\Delta\Delta CT = \Delta CT_{sample} - \Delta CT_{calibrator}$; methylation of *CDO1* = $100/(1+2^{(\Delta\Delta CT)})$.

Methylation BeadChip: The methylation data generated by the TCGA Research Network (<http://cancergenome.nih.gov/>) were created by means of the Infinium HumanMethylation450 BeadChip (Illumina, Inc., San Diego, CA, USA). HumanMethylation450 data of level 2 were downloaded directly from the TCGA webpage. The tab-delimited, ASCII text (.txt) files included background-corrected methylated (bead_M) and unmethylated (bead_U) summary intensities as extracted by the R package 'methyumi'. The two bead pairs (cg12880658, cg16265906) in proximity to the locus of the QM qPCR assay were selected. Methylation values for each bead pair were calculated by the formula $100\% \times \text{bead_M} / (\text{bead_M} + \text{bead_U})$. The mean methylation values from both bead pairs were computed and used for analysis.

Immunohistochemistry

Immunohistochemical staining of Ki67 and AR have previously been described.^{16,17} ERG staining was performed in the immunohistochemistry laboratory of the Institute of Pathology, University Hospital of Bonn. Immunohistochemical staining in the tissue sections was performed using the LabVision Autostainer 480S system (Thermo Scientific, Waltham, MA, USA) along with the Thermo Scientific Reagents and the N-Histofine® DAB-3S detection kit. The PT-Module was used for dewaxing and epitope retrieval (pH 6.0 at 99°C for 20 min). The following antibodies and dilutions were used: Ki-67, clone MIB-1 (Dako, Glostrup, Denmark; 1:500); androgen receptor, clone AR441 (Dako A/S, Glostrup, Denmark; 1:400); ERG, clone EPR3864 (Biologo, Kronshagen, Germany; 1:100). Evaluation of the slides was performed by 2 experienced pathologists (GK, VS).

Cell lines

Six PCa cell lines (PC3, LNCaP, DUCaP, VCaP, DU145, 22Rv1) and the non-tumorigenic cell lines HEK293T and BPH were analyzed. Cell lines were authenticated using Multiplex Cell Authentication by Multiplexion GmbH (Heidelberg, Germany) as previously described.⁴¹ The SNP profiles matched known profiles or were unique. Cell lines were grown in accordance to the instructions from the American Type Culture Collection.

mRNA expression analysis

CDO1 mRNA expression was analyzed in cell lines as well as in fresh frozen tumor and NAT specimens. Total RNA was isolated from cell pellets and fresh frozen tissues by means of the RNeasy® Kit (Qiagen, Hilden, Germany) following the "animal tissue" protocol. First-strand cDNA synthesis was conducted with oligo-dT primers and the SuperScript® III RT kit (ThermoFisher Scientific, Darmstadt, Germany) according to the manufacturer's protocol. A total of 500 ng RNA were used in a total reaction volume of 20 μ l.

Five nanograms of cDNA were used in a final PCR volume of 20 μ l. All real-time RT-PCR assays were measured in duplicates using an AB 7500 Fast Real-Time PCR System (Life Technologies Corporation, Carlsbad, CA, USA). Oligonucleotide sequences are given in Supplementary Tab. S1. Expression levels of *CDO1*-mRNA were normalized to human *G6PD*- and *SDHA*-mRNA used as internal control.

The mRNA data provided by the TCGA Research Network (<http://cancergenome.nih.gov/>) were generated by means of the Illumina HiSeq 2000 RNA Sequencing Version 2 analysis (Illumina, Inc., San Diego, CA, USA). mRNA expression data of level 3 were downloaded directly from the TCGA webpage. The tab-delimited ASCII text files included the normalized results for the expression of a gene. Counts per genes were calculated using the SeqWare framework via the RSEM algorithm.⁴²

Statistics

Statistical analyses were performed using SPSS, Version 21 (IBM SPSS Statistics). Wilcoxon–Mann–Whitney tests were used to evaluate the statistical significance between *CDO1* methylation and clinicopathological parameters. The Pearson correlation coefficient was used for bivariate correlation analysis. BCR-free survival was defined as the time from prostatectomy to BCR or last contact. Univariate survival analyses were conducted according to univariate Cox proportional hazards and Kaplan–Meier analyses. *P*-values refer to Wald test and log-rank test, respectively. Two-sided *P*-values were reported and *P*-values < 0.05 were considered statistically significant. The association of methylation and mRNA expression was visualized using the MEXPRESS software tool.⁴³

Disclosure of potential conflicts of interest

Dimo Dietrich is co-inventor and owns patents on methylation biomarkers and related technologies. These patents are commercially exploited by

Epigenomics AG. Dimo Dietrich receives inventor's compensation from Epigenomics AG. Dimo Dietrich is a consultant for AJ Innuscreen GmbH (Berlin, Germany), a 100% daughter company of Analytik Jena AG (Jena, Germany), and receives royalties from product sales. The other authors declare that they have no conflict of interest.

References

- Siegel RL, Miller KD, Jemal A. Cancer statistics, 2016. *CA Cancer J Clin* 2016; 66:7-30; PMID:26742998; <http://dx.doi.org/10.3322/caac.21332>
- Kristiansen G. Diagnostic and prognostic molecular biomarkers for prostate cancer. *Histopathology* 2012; 60:125-41; PMID:22212082; <http://dx.doi.org/10.1111/j.1365-2559.2011.04083.x>
- Huber F, Montani M, Sulser T, Jaggi R, Wild P, Moch H, Gevensleben H, Schmid M, Wyder S, Kristiansen G. Comprehensive validation of published immunohistochemical prognostic biomarkers of prostate cancer - what has gone wrong? A blueprint for the way forward in biomarker studies. *Br J Cancer* 2015; 112:140-8; PMID:25422912; <http://dx.doi.org/10.1038/bjc.2014.588>
- Dietrich D, Meller S, Uhl B, Ralla B, Stephan C, Jung K, Ellinger J, Kristiansen G. Nucleic acid-based tissue biomarkers of urologic malignancies. *Crit Rev Clin Lab Sci* 2014; 51:173-99; PMID:24878394; <http://dx.doi.org/10.3109/10408363.2014.906130>
- Holmes EE, Jung M, Meller S, Leisse A, Sailer V, Zech J, Mengdehl M, Garbe LA, Uhl B, Kristiansen G, et al. Performance evaluation of kits for bisulfite-conversion of DNA from tissues, cell lines, FFPE tissues, aspirates, lavages, effusions, plasma, serum, and urine. *PLoS One* 2014; 9:e93933; PMID:24699908; <http://dx.doi.org/10.1371/journal.pone.0093933>
- Dietrich D, Krispin M, Dietrich J, Fassbender A, Lewin J, Harbeck N, Schmitt M, Eppenberger-Castori S, Vuaroqueaux V, Spyrtatos F, et al. CDO1 promoter methylation is a biomarker for outcome prediction of anthracycline treated, estrogen receptor-positive, lymph node-positive breast cancer patients. *BMC Cancer* 2010; 10:247; PMID:20515469; <http://dx.doi.org/10.1186/1471-2407-10-247>
- Jeschke J, O'Hagan HM, Zhang W, Vatapalli R, Calmon MF, Danilova L, Nelkenbrecher C, Van NL, Bijmans IT, Van EM, et al. Frequent inactivation of cysteine dioxygenase type 1 contributes to survival of breast cancer cells and resistance to anthracyclines. *Clin Cancer Res* 2013; 19:3201-11; PMID:23630167; <http://dx.doi.org/10.1158/1078-0432.CCR-12-3751>
- Minatani N, Waraya M, Yamashita K, Kikuchi M, Ushiku H, Kojo K, Ema A, Nishimiya H, Kosaka Y, Katoh H, et al. Prognostic significance of promoter DNA Hypermethylation of cysteine dioxygenase 1 (CDO1) gene in primary breast cancer. *PLoS One* 2016; 11:e0144862; PMID:26785325; <http://dx.doi.org/10.1371/journal.pone.0144862>
- Brait M, Ling S, Nagpal JK, Chang X, Park HL, Lee J, Okamura J, Yamashita K, Sidransky D, Kim MS. Cysteine dioxygenase 1 is a tumor suppressor gene silenced by promoter methylation in multiple human cancers. *PLoS One* 2012; 7:e44951; PMID:23028699; <http://dx.doi.org/10.1371/journal.pone.0044951>
- Yamashita K, Waraya M, Kim MS, Sidransky D, Katada N, Sato T, Nakamura T, Watanabe M. Detection of methylated CDO1 in plasma of colorectal cancer; a PCR study. *PLoS One* 2014; 9:e113546; PMID:25469504; <http://dx.doi.org/10.1371/journal.pone.0113546>
- Andresen K, Boberg KM, Vedeld HM, Honne H, Hektoen M, Wadsworth CA, Clausen OP, Karlsen TH, Foss A, Mathisen O, et al. Novel target genes and a valid biomarker panel identified for cholangiocarcinoma. *Epigenetics* 2012; 7:1249-57; PMID:22983262; <http://dx.doi.org/10.4161/epi.22191>
- Deckers IA, Schouten LJ, Van NL, van Vlodrop IJ, Soetekouw PM, Baldewijns MM, Jeschke J, Ahuja N, Herman JG, van den Brandt PA, et al. Promoter Methylation of CDO1 identifies clear-cell renal cell cancer patients with poor survival outcome. *Clin Cancer Res* 2015; 21:3492-500; PMID:25904753; <http://dx.doi.org/10.1158/1078-0432.CCR-14-2049>
- Chai SC, Bruyere JR, Maroney MJ. Probes of the catalytic site of cysteine dioxygenase. *J Biol Chem* 2006; 281:15774-9; PMID:16611641; <http://dx.doi.org/10.1074/jbc.M601269200>
- Joseph CA, Maroney MJ. Cysteine dioxygenase: structure and mechanism. *Chem Commun (Camb)* 2007; 32:3338-49; PMID:18019494; <http://dx.doi.org/10.1039/b702158e>
- Satsu H, Terasawa E, Hosokawa Y, Shimizu M. Functional characterization and regulation of the taurine transporter and cysteine dioxygenase in human hepatoblastoma HepG2 cells. *Biochem J* 2003; 375:441-7; PMID:12871209; <http://dx.doi.org/10.1042/bj20030535>
- Gevensleben H, Dietrich D, Golletz C, Steiner S, Jung M, Thiesler T, Majores M, Stein J, Uhl B, Muller S, et al. The immune checkpoint regulator PD-L1 is highly expressed in aggressive primary prostate cancer. *Clin Cancer Res* 2015; 22:1969-77; PMID:26573597; <http://dx.doi.org/10.1158/1078-0432.CCR-15-2042>
- Meller S, Bicker A, Montani M, Ikenberg K, Rostamzadeh B, Sailer V, Wild P, Dietrich D, Uhl B, Sulser T, et al. Myoglobin expression in prostate cancer is correlated to androgen receptor expression and markers of tumor hypoxia. *Virchows Arch* 2014; 465:419-27; PMID:25172328; <http://dx.doi.org/10.1007/s00428-014-1646-y>
- Epstein JI, Egevad L, Amin MB, Delahunt B, Srigley JR, Humphrey PA. The 2014 International Society of Urological Pathology (ISUP) consensus conference on gleason grading of prostatic carcinoma: Definition of grading patterns and proposal for a new grading system. *Am J Surg Pathol* 2016; 40:244-252; PMID:26492179; <http://dx.doi.org/10.1097/PAS.0000000000000530>
- Meller S, Meyer HA, Bethan B, Dietrich D, Gonzalez MS, Lein M, Montani M, Reszka R, Schatz P, Peter E, et al. Integration of tissue metabolomics, transcriptomics and immunohistochemistry reveals ERG- and gleason score- specific metabolomic alterations in prostate cancer. *Oncotarget* 2015; 7:1421-38; PMID:26623558; <http://dx.doi.org/10.18632/oncotarget.6370>
- Sreekumar A, Poisson LM, Rajendiran TM, Khan AP, Cao Q, Yu J, Laxman B, Mehra R, Lonigro RJ, Li Y, et al. Metabolomic profiles delineate potential role for sarcosine in prostate cancer progression. *Nature* 2009; 457:910-4; PMID:19212411; <http://dx.doi.org/10.1038/nature07762>
- Stabler S, Koyama T, Zhao Z, Martinez-Ferrer M, Allen RH, Luka Z, Loukachevitch LV, Clark PE, Wagner C, Bhowmick NA. Serum methionine metabolites are risk factors for metastatic prostate cancer progression. *PLoS One* 2011; 6:e22486; PMID:21853037; <http://dx.doi.org/10.1371/journal.pone.0022486>
- Stipanuk MH, Ueki I, Dominy JE, Jr, Simmons CR, Hirschberger LL. Cysteine dioxygenase: a robust system for regulation of cellular cysteine levels. *Amino Acids* 2009; 37:55-63; PMID:19011731; <http://dx.doi.org/10.1007/s00726-008-0202-y>
- Dominy JE, Jr, Hwang J, Stipanuk MH. Overexpression of cysteine dioxygenase reduces intracellular cysteine and glutathione pools in HepG2/C3A cells. *Am J Physiol Endocrinol Metab* 2007; 293:E62-9; PMID:17327371; <http://dx.doi.org/10.1152/ajpendo.00053.2007>
- Griffith OW. Biologic and pharmacologic regulation of mammalian glutathione synthesis. *Free Radic Biol Med* 1999; 27:922-35; PMID:10569625; [http://dx.doi.org/10.1016/S0891-5849\(99\)00176-8](http://dx.doi.org/10.1016/S0891-5849(99)00176-8)
- Schuller-Levis GB, Park E. Taurine: new implications for an old amino acid. *FEMS Microbiol Lett* 2003; 226:195-202; PMID:14553911; [http://dx.doi.org/10.1016/S0378-1097\(03\)00611-6](http://dx.doi.org/10.1016/S0378-1097(03)00611-6)
- Stewart GD, Gray K, Pennington CJ, Edwards DR, Riddick AC, Ross JA, Habib FK. Analysis of hypoxia-associated gene expression in prostate cancer: lysyl oxidase and glucose transporter-1 expression correlate with Gleason score. *Oncol Rep* 2008; 20:1561-7; PMID:19020742; http://dx.doi.org/10.3892/or_00000180
- Sabharwal SS, Schumacker PT. Mitochondrial ROS in cancer: initiators, amplifiers or an Achilles' heel? *Nat Rev Cancer* 2014; 14:709-21; PMID:25342630; <http://dx.doi.org/10.1038/nrc3803>
- Sweeney CJ, Chen YH, Carducci M, Liu G, Jarrard DF, Eisenberger M, Wong YN, Hahn N, Kohli M, Cooney MM, et al. Chemohormonal therapy in metastatic hormone-sensitive prostate cancer. *N Engl J Med* 2015; 373:737-46; PMID:26244877; <http://dx.doi.org/10.1056/NEJMoa1503747>
- Hung CH, Chan SH, Chu PM, Tsai KL. Docetaxel facilitates endothelial dysfunction through oxidative stress via modulation of protein kinase C Beta: The protective effects of sotrastaurin.

- Toxicol Sci 2015; 145:59-67; PMID:25634538; <http://dx.doi.org/10.1093/toxsci/kfv017>
30. Yang L, Zheng LY, Tian Y, Zhang ZQ, Dong WL, Wang XF, Zhang XY, Cao C. C6 ceramide dramatically enhances docetaxel-induced growth inhibition and apoptosis in cultured breast cancer cells: a mechanism study. *Exp Cell Res* 2015; 332:47-59; PMID:25576381; <http://dx.doi.org/10.1016/j.yexcr.2014.12.017>
 31. Mizumachi T, Suzuki S, Naito A, Carcel-Trullols J, Evans TT, Spring PM, Oridate N, Furuta Y, Fukuda S, Higuchi M. Increased mitochondrial DNA induces acquired docetaxel resistance in head and neck cancer cells. *Oncogene* 2008; 27:831-8; PMID:17637738; <http://dx.doi.org/10.1038/sj.onc.1210681>
 32. Cao D, Qiao B, Ge Z, Yuan Y. Amplification loop cascade for increasing caspase activity induced by docetaxel. *J Cell Biochem* 2005; 96:810-20; PMID:16149076; <http://dx.doi.org/> <http://dx.doi.org/10.1002/jcb.20563>
 33. Mediavilla-Varela M, Pacheco FJ, Almaguel F, Perez J, Sahakian E, Daniels TR, Leoh LS, Padilla A, Wall NR, Lilly MB, et al. Docetaxel-induced prostate cancer cell death involves concomitant activation of caspase and lysosomal pathways and is attenuated by LEDGF/p75. *Mol Cancer* 2009; 8:68; PMID:19715609; <http://dx.doi.org/10.1186/1476-4598-8-68>
 34. Borno ST, Fischer A, Kerick M, Falth M, Laible M, Brase J.C, Kuner R, Dahl A, Grimm C, Sayanjali B, et al. Genome-wide DNA methylation events in TMPRSS2-ERG fusion-negative prostate cancers implicate an EZH2-dependent mechanism with miR-26a hypermethylation. *Cancer Discov* 2012; 2:1024-35; PMID:22930729; <http://dx.doi.org/10.1158/2159-8290.CD-12-0041>
 35. Wu Q, Ni X. ROS-mediated DNA methylation pattern alterations in carcinogenesis. *Curr Drug Targets* 2015; 16:13-9; PMID:25585126; <http://dx.doi.org/10.2174/1389450116666150113121054>
 36. Banez LL, Sun L, van Leenders GJ, Wheeler TM, Bangma CH, Freedland SJ, Ittmann MM, Lark AL, Madden JF, Hartman A, et al. Multicenter clinical validation of PITX2 methylation as a prostate specific antigen recurrence predictor in patients with post-radical prostatectomy prostate cancer. *J Urol* 2010; 184:149-56; PMID:20478579; <http://dx.doi.org/10.1016/j.juro.2010.03.012>
 37. Weiss G, Cottrell S, Distler J, Schatz P, Kristiansen G, Ittmann M, Haefliger C, Lesche R, Hartmann A, Corman J, et al. DNA methylation of the PITX2 gene promoter region is a strong independent prognostic marker of biochemical recurrence in patients with prostate cancer after radical prostatectomy. *J Urol* 2009; 181:1678-85; PMID:19233404; <http://dx.doi.org/10.1016/j.juro.2008.11.120>
 38. Haldrup C, Mundbjerg K, Vestergaard EM, Lamy P, Wild P, Schulz WA, Arsov C, Visakorpi T, Borre M, Hoyer S. et al. DNA methylation signatures for prediction of biochemical recurrence after radical prostatectomy of clinically localized prostate cancer. *J Clin Oncol* 2013; 31:3250-58; PMID:23918943; <http://dx.doi.org/10.1200/JCO.2012.47.1847>
 39. Kristensen H, Haldrup C, Strand S, Mundbjerg K, Mortensen MM, Thorsen K, Ostenfeld MS, Wild PJ, Arsov C, Goering W, et al. Hypermethylation of the GABRE~miR-452~miR-224 promoter in prostate cancer predicts biochemical recurrence after radical prostatectomy. *Clin Cancer Res* 2014; 20:2169-81; PMID:24737792; <http://dx.doi.org/10.1158/1078-0432.CCR-13-2642>
 40. Strand SH, Orntoft TF, Sorensen KD. Prognostic DNA methylation markers for prostate cancer. *Int J Mol Sci* 2014; 15:16544-76; PMID:25238417; <http://dx.doi.org/10.3390/ijms150916544>
 41. Castro F, Dirks WG, Fahrnich S, Hotz-Wagenblatt A, Pawlita M, Schmitt M. High-throughput SNP-based authentication of human cell lines. *Int J Cancer* 2013; 132:308-14; PMID:22700458; <http://dx.doi.org/10.1002/ijc.27675>
 42. Li B, Dewey CN. RSEM: accurate transcript quantification from RNA-Seq data with or without a reference genome. *BMC Bioinformatics* 2011; 12:323; PMID:21816040; <http://dx.doi.org/10.1186/1471-2105-12-323>
 43. Koch A, De MT, Jeschke J, Van CW. Mexpress: visualizing expression, DNA methylation and clinical TCGA data. *BMC Genomics* 2015; 16:636; PMID:26306699; <http://dx.doi.org/10.1186/s12864-015-1847-z>

3. Danksagung

Ich möchte mich ganz herzlich bei allen Menschen bedanken, die mich bei der Erstellung dieser Arbeit unterstützt haben.

Großer Dank gebührt vor allem Herrn Prof. Dr. med. Glen Kristiansen, für die Überlassung des hochinteressanten Themas dieser Arbeit und die ausgezeichneten Möglichkeiten, es zu bearbeiten. Ich danke für die Hilfsbereitschaft und Geduld, die er mir, trotz seiner Belastung in Klinik und Forschung, entgegenbrachte.

Ganz besonderen Dank schulde ich auch Herrn Prof. Dr. Dimo Dietrich, der mir mit seinem Fachwissen zur Seite stand und die Arbeit maßgeblich voranbrachte.

Ebenso danke ich ihm für die Durchsicht meiner Arbeit und die vielen Hinweise, die zur Vollendung derselben notwendig waren.

Herrn Dr. rer. nat. Sebastian Meller danke ich für die ausgezeichnete und akribische Hilfe bei der Durchführung der Experimente und die Bereicherung meines Forschungsprojektes durch seine Ideen, Anregungen und konstruktive Kritik.

Des Weiteren danke ich allen anderen Mitarbeitern des Instituts für Pathologie der Universitätsklinik Bonn, insbesondere der Biomarkergruppe für die freundschaftliche Arbeitsatmosphäre, viele wertvolle Anregungen und stete Hilfsbereitschaft, die wesentlich zum Gelingen meiner Arbeit beigetragen haben.

Nicht zuletzt danke ich vor allem meinen Eltern, die in jeglicher Hinsicht die Grundsteine für meinen Weg gelegt haben und mich immer unterstützen.